



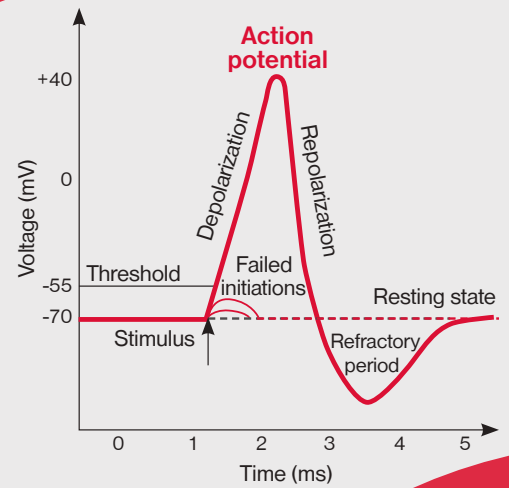
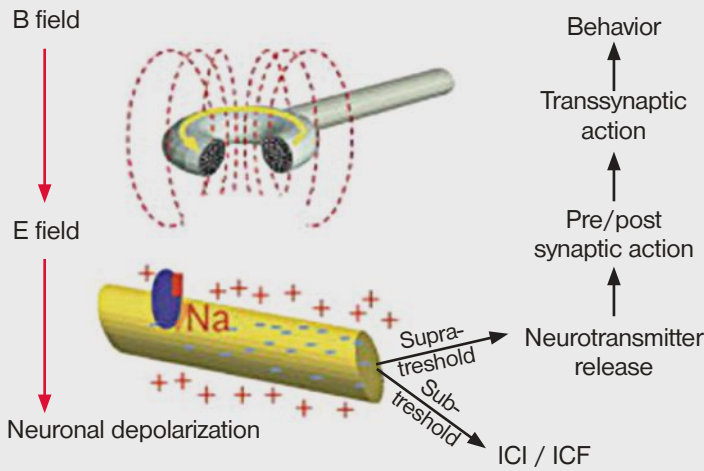
FMS Care™

FUNCTIONAL
MAGNETIC
STIMULATION



REHABILITATION
UROGYNECOLOGY
SPORTS MEDICINE
NEUROPHYSIOTHERAPY

How does a magnetic field activate a muscle?



FMS handheld applicators

The device can be used in physiotherapy or rehabilitation. The appropriate areas for triggering muscle stimulation can be quickly located using the handheld FMS applicator. The FMS device delivers pulses of magnetic field which can activate even the weakened muscles and strengthens them. The FMS handheld applicators come in to different sizes.

Hands free application is achieved by attaching the FMS applicator on a special mechanical arm or fastening them to the body with rubber straps.

Chair for lumbar area

The treatment stimulates muscles and accelerates circulation without direct contact to the skin. Therapy procedure is simple and the patient does not require any spacial preparation.

During the therapy the patient simply sits in the chair. The exact area of stimulation of the lower back can be set by changing the position of the applicator in the chair backrest.

NEURO-
PHYSIOTHERAPY

GERIATRIC
DISORDERS

FMS A
OF U

MUSCULOSKELETAL
REHABILITATION

INCONT

Rapid changes of magnetic field intensity induce an electrical current in the neuron. This phenomenon is called electromagnetic induction.

Once the current reaches a certain value, a so-called neuron action potential is achieved. This causes the neuron cell to depolarize, which eventually leads to a complete muscle contraction.

FMS effects as visible on the thermal images

Thermal images show us the effect of FMS therapy before and after. Because of the muscle activation and strong pulsed magnetic field effect we can see significant change in blood circulation, vasodilatation and increase of metabolism.

**REPRODUCTIVE
SYSTEM DISORDERS**

**AREAS
USE**

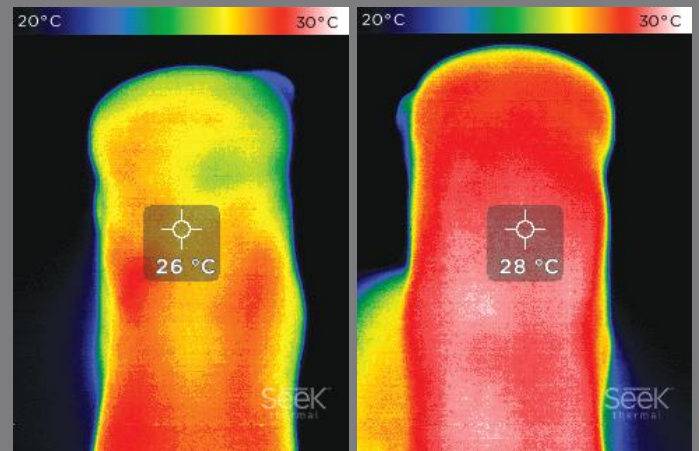
**PAIN
RELIEF**

**REHABILITATION
OF SPORTS INJURIES**

CONTINENCE

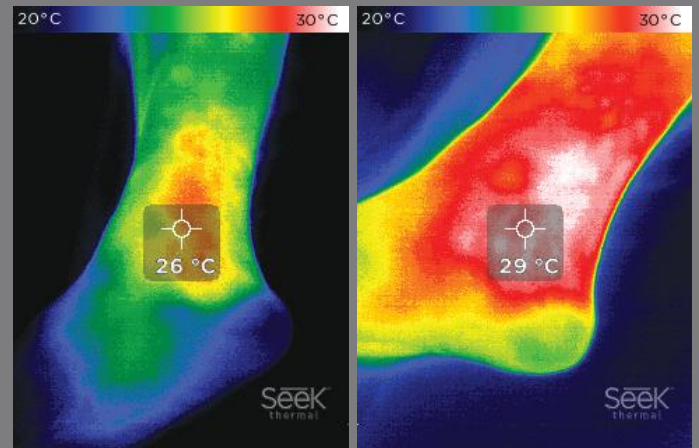
ACHILLES TENDON

Before &
After



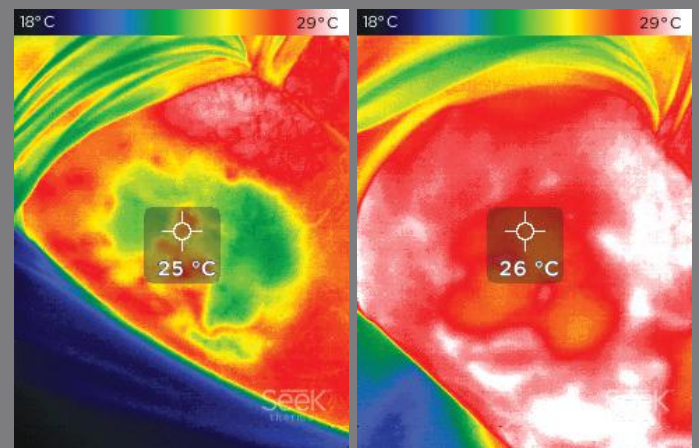
ANKLE

Before &
After



THIGH

Before &
After



CE 2265



FMS
Care
(1800614)

4 CHANNELS

Accessories

APPLICATOR FMS2 M
(15113052)



APPLICATOR FMS2 L
(15113062)



Chair FMS
for Pelvic &
Back area
(16006352)

Pedestal
for chair
(1600636)

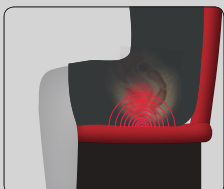


Trolley
FMS
(1600879)

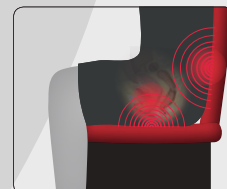


Arm for
applicator
(1600631)

There are two different chair models that are used to treat lumbar area and pelvic floor area:



Chair FMS for Pelvic area (1600632)



Chair FMS for Pelvic & Back area (16006352)



CE 2265

FMS Care™ **4 CHANNELS**

FUNCTIONAL
MAGNETIC
STIMULATION

Advantages:

DEEP STIMULATION OF MUSCULAR STRUCTURES

MORE EFFECTIVE THAN ELECTROSTIMULATION

PAINLESS AND NON-INVASIVE THERAPY

SUITABLE FOR PATIENTS WHERE ELECTROTHERAPY CANNOT BE USED

NO SKIN CONTACT

THERAPY WITH OR WITHOUT THERAPIST



EFFECTIVE AND DURABLE

IMPROVEMENTS
AFTER A FEW
SESSIONS



SAFE AND PAINLESS

RESULTS ARE
SUPPORTED BY
SCIENTIFIC STUDIES



NON INVASIVE

EFFECTIVELY STIMULATES
MUSCLE TISSUE WITHOUT
DIRECT SKIN CONTACT

iskramedical.eu

DISTRIBUTOR: